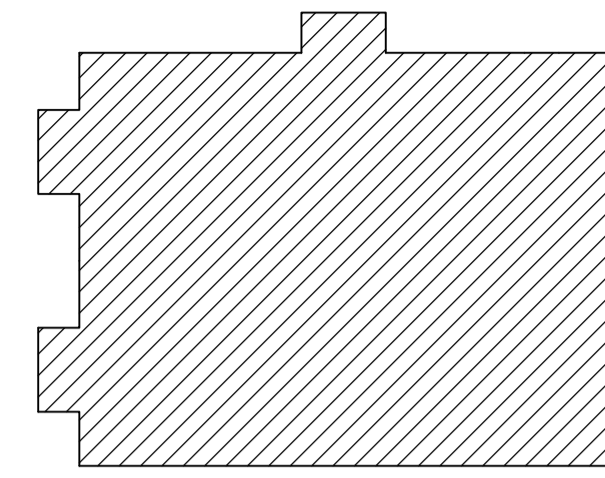
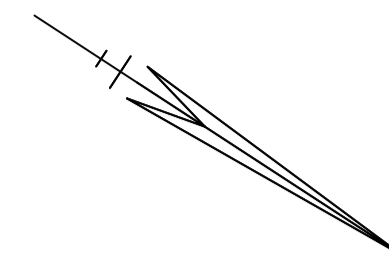


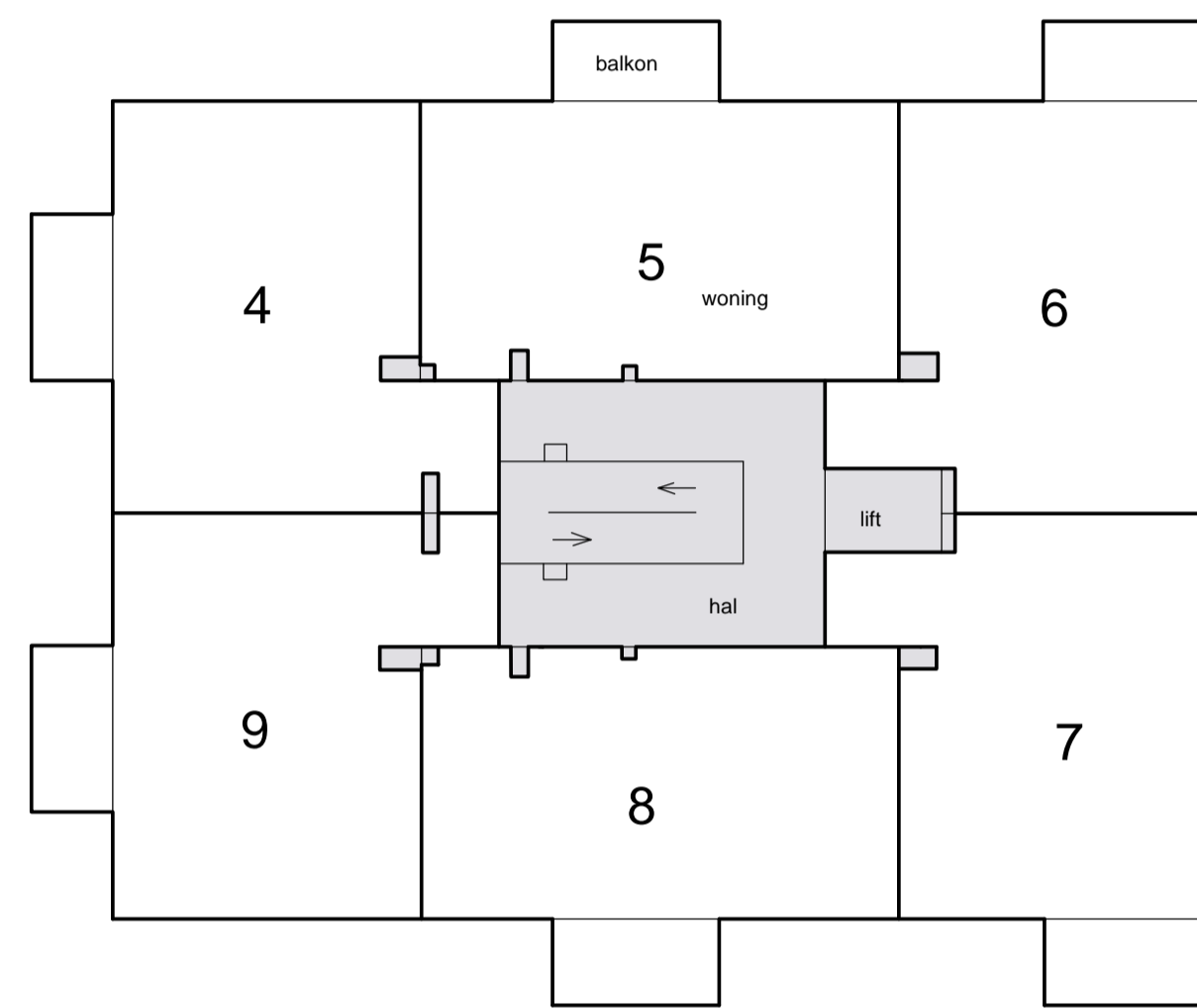
Voorgenomen splitsing in appartementsrechten van het kadastrale perceel: Hellevoetsluis C



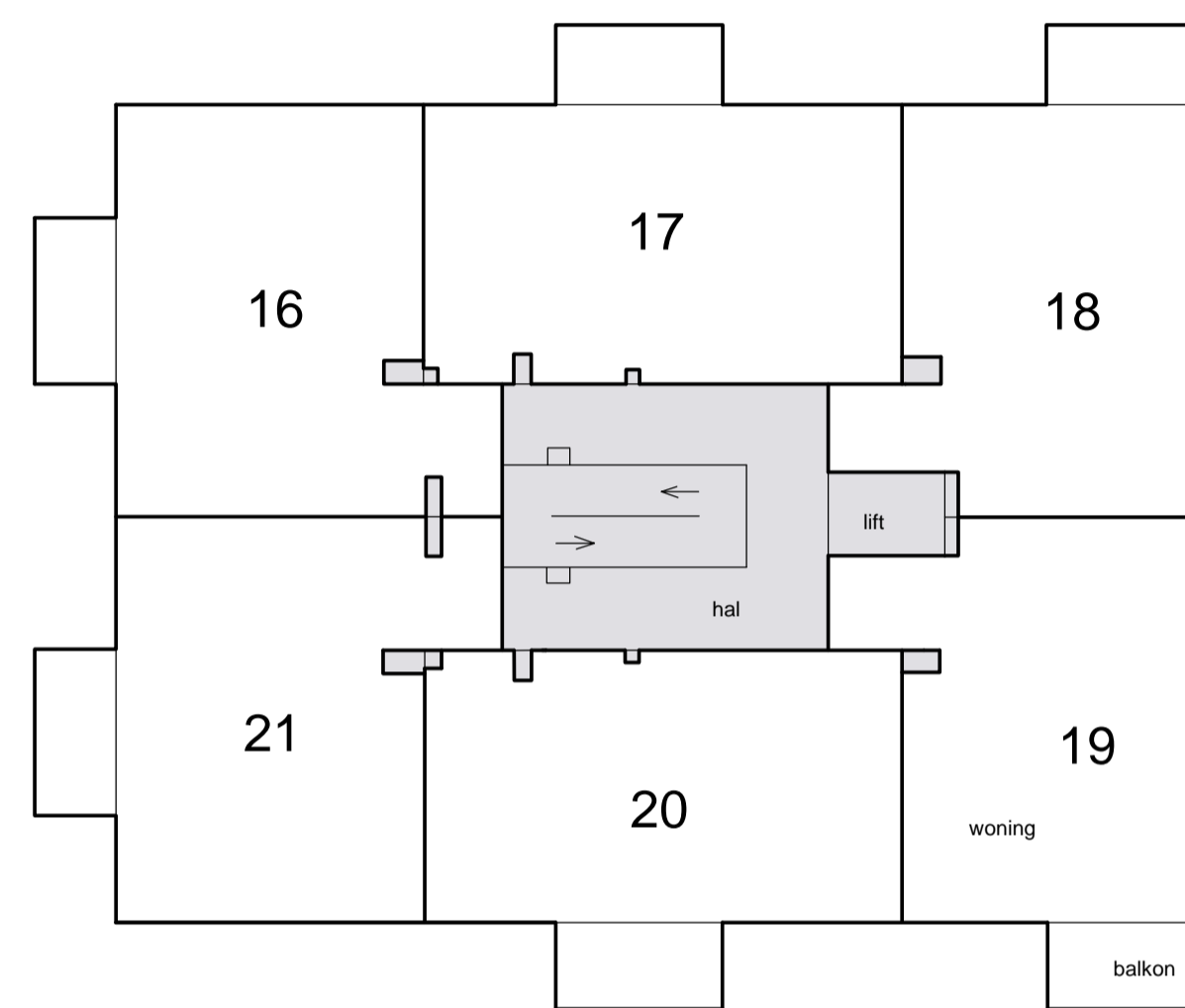
Kanaalweg Westzijde

Situatie 1 : 1000 Hellevoetsluis C

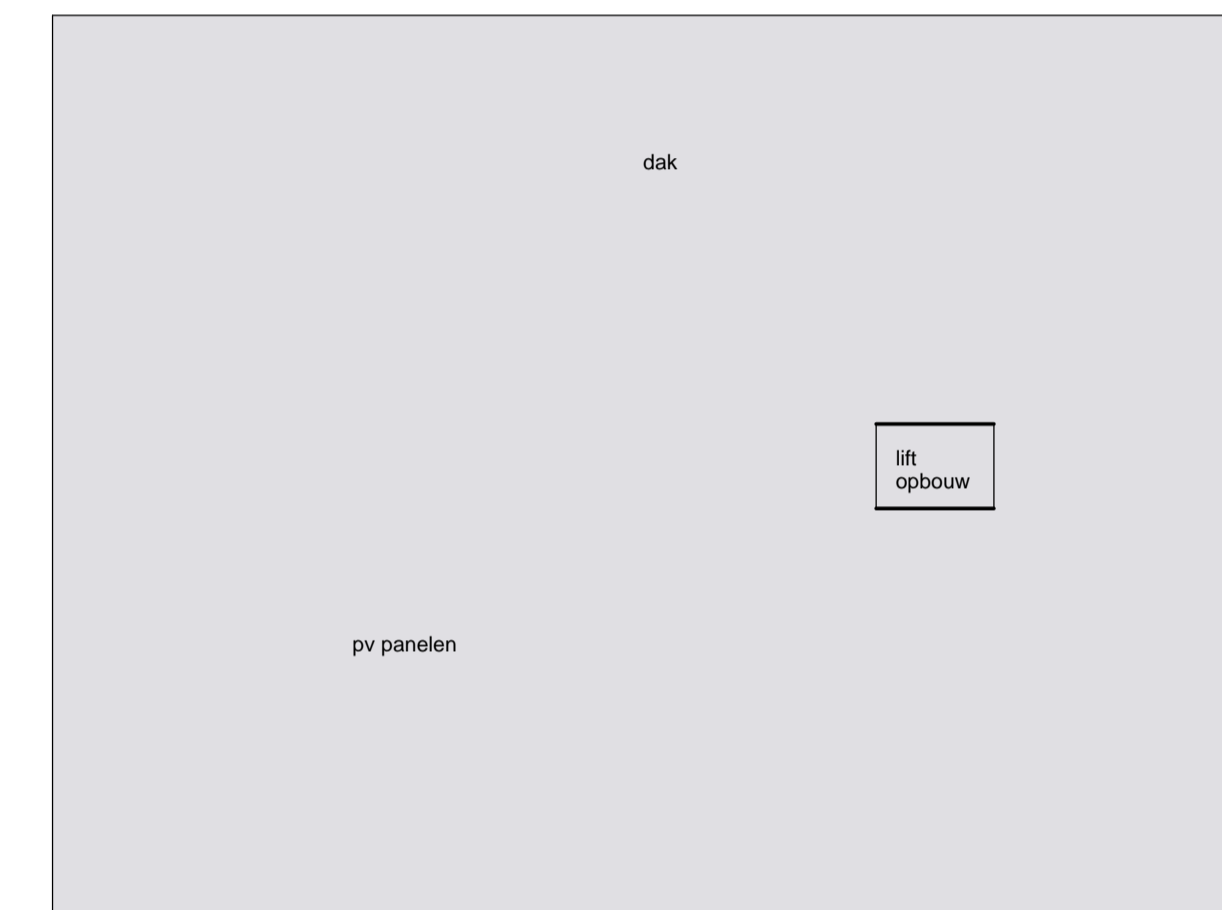
Schaal 1 : 200
 [shaded box] = Gemeenschappelijk



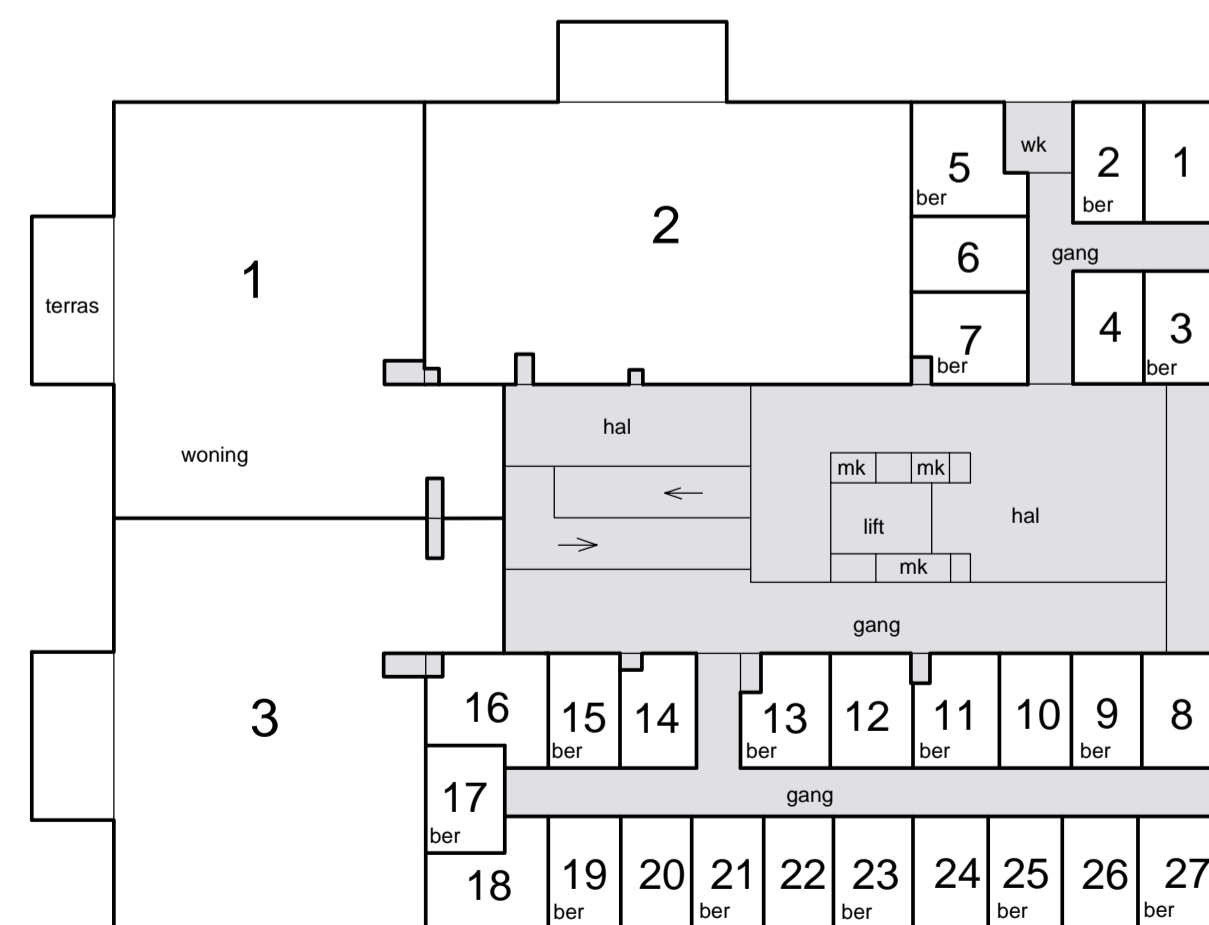
1e etage



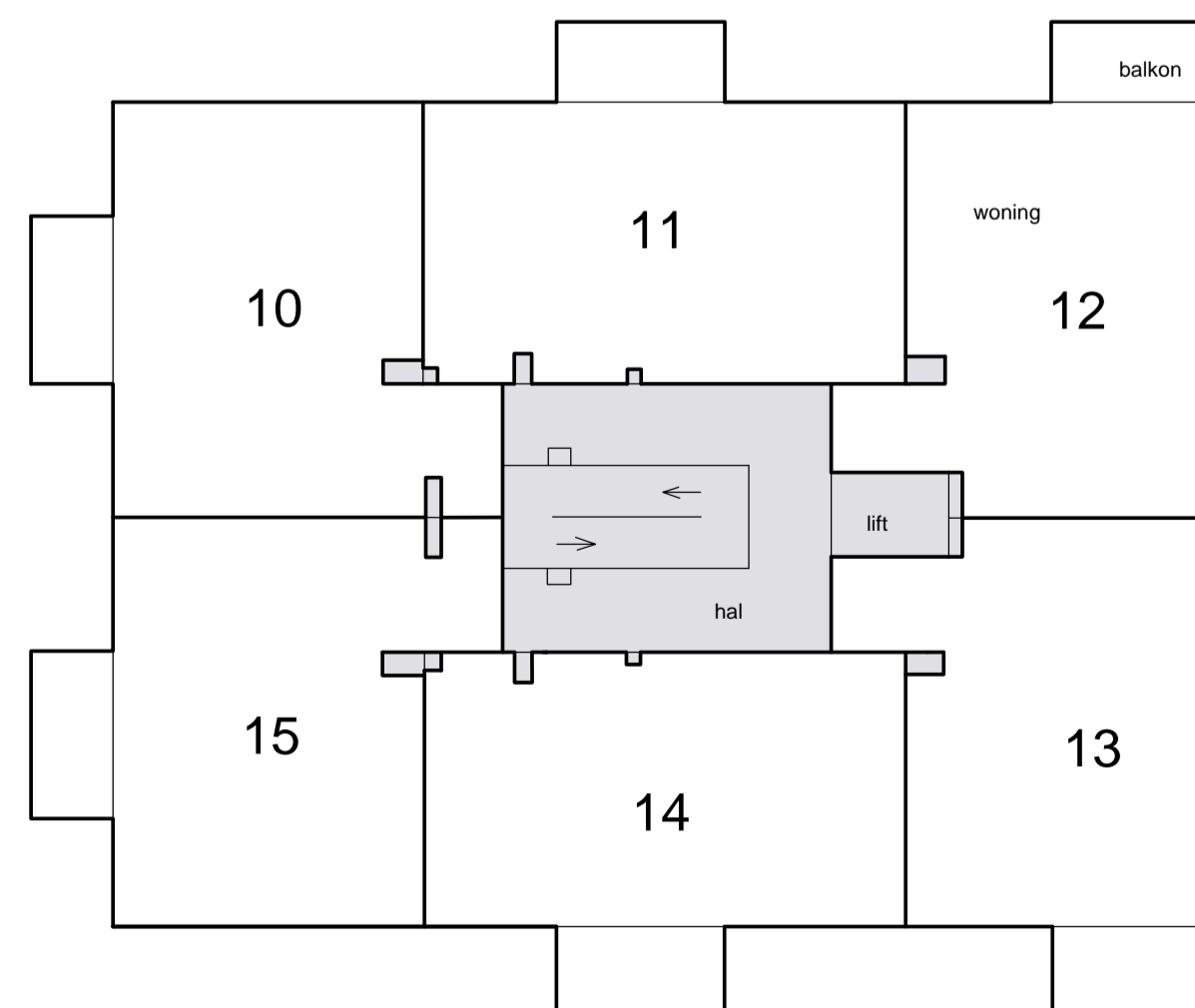
3e etage



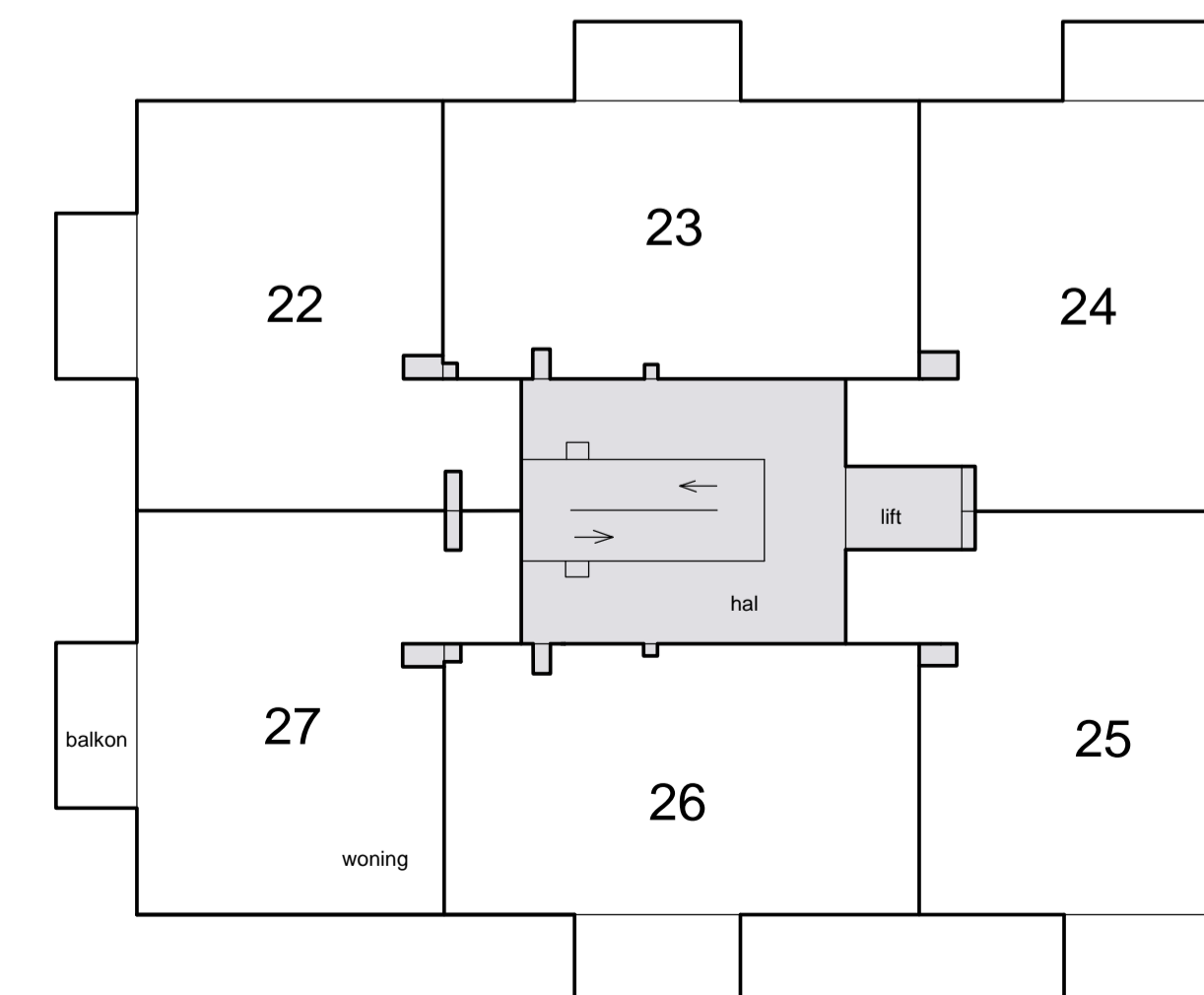
dak



begane grond



2e etage



4e etage

